

SwitchPilot

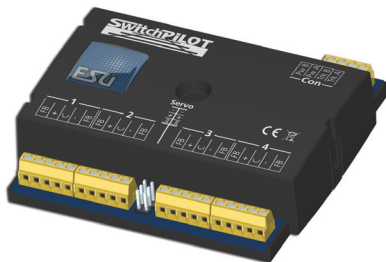
User manual

Third edition, October 2008

51800 SwitchPilot

51801 SwitchPilot Extension

51802 SwitchPilot Servo



RailCom

SwitchPILOT

P/N 04708-07029



Contents

1. Declaration of conformity	3
2. WEEE declaration	3
3. Important notes – Please read this chapter first	4
4. How this manual will help you	4
5. Introduction – The SwitchPilot family	5
5.1. Members of the SwitchPilot family	5
5.1.1. SwitchPilot Decoder at a glance	5
5.1.2. SwitchPilot	5
5.1.3. SwitchPilot Servo	6
5.1.4. SwitchPilot Extension	6
5.2. Features	6
5.2.1. Operational modes	6
5.2.1.1. k83 mode	6
5.2.1.2. k84 mode	7
5.2.1.3. User mode	7
5.2.2. Transistor outputs	7
5.2.3. Servo outputs	7
5.2.4. Relay outputs	8
5.2.5. Feedback signal input	8
5.2.6. Switching input	8
6. Connecting to the digital system	8
6.1. Terminals of the SwitchPilot	8
6.2. Terminals of the SwitchPilot Extension	9
6.3. Terminals of the SwitchPilot Servo	10
6.4. Power supply from the digital system	11
6.5. Separate power supply	11
6.6. Wiring of the SwitchPilot Extension	11
6.7. Wiring of the transistor outputs	12
6.7.1. Connecting double-coil solenoids	12
6.7.2. Wiring of daylight signals and light bulbs or LEDs	13
6.7.3. Wiring of a motor drive	13
6.8. Wiring of a servo	14
6.9. Wiring of feedback contacts	14
6.10. Polarizing electric frogs	15
7. Decoder settings (programming)	15
7.1. Changeable decoder features	15
7.1.1. Configuration Variables (CVs)	15
7.1.1.1. Standardization regarding NMRA	15
7.1.1.2. Bits and bytes	16
7.2. Programming with DCC systems	16
7.2.1. Programming on the main track	16
7.2.2. Programming on the programming track	16
7.2.2.1. Connecting to the programming track	17
7.3. Programming with Märklin® central stations	17
7.4. Programming with the ESU LokProgrammer	18
8. Address settings	18
8.1. Turnout numbers	18
8.2. Decoder addresses	18
8.2.1. Schedule of turnout numbers and addresses	18
8.3. Factory settings	20
8.4. Programming addresses with the programming button	20
8.4.1. First address for outputs 1 – 4	20
8.4.2. Second address for outputs 5 – 6	20
9. Features of transistor outputs	21
9.1. Configuration for impulse output (k83)	21
9.2. Configuration for preset pulse time	21
9.3. Configuration for PECO turnout motors	21
9.4. Configuration for alternate blinking mode	21
9.5. Configuration for variable (k84)	21
9.6. Configuration for „zoom“ effect for impulse output ..	21
10. Features of servo outputs	21
10.1. Configuration of servo end position „A“	21
10.2. Configuration of servo end position „B“	21

10.3. Configuration of servo speed	22
10.4. Configuration of servo outputs with input unit	22
11. RailCom®	23
11.1. Activating RailCom®	23
11.2. Reading of CVs with RailCom® and ESU ECoS	23
11.2. Feedback of turnout position with ECoS	24
12. Direct switching with push button inputs	25
13. Options for SwitchPilot Extension	25
13.1. Switching point	25
13.2. Allocation of relays	25
14. Decoder reset	26
14.1. With DCC systems	26
14.2. With the programming button	26
14.3. With the ESU LokProgramer	26
15. Support and assistance	26
16. Technical Data	27
16.1. Technical data of SwitchPilot	27
16.2. Technical data of SwitchPilot Servo	27
16.3. Technical data of SwitchPilot Extension	27
17. List of all CVs	28
18. Warranty	31

1. Declaration of conformity

We, ESU electronic solutions ulm GmbH & Co KG, Industriestrasse 5, D-89081 Ulm, declare in sole responsibility that the products to which this declaration refers, namely

SwitchPilot, SwitchPilot Extension, SwitchPilot Servo

are in compliance with the following standards:

EN 71 1-3: 1988 / 6: 1994 – EN 50088: 1996 – EN 55014, part 1 + part 2: 1993

EN 61000-3-2: 1995 – EN 60742: 1995 – EN 61558-2-7: 1998 according to the directive 88 / 378 / EWG – 89 / 336 / EWG – 73 / 23 / EWG

2. WEEE declaration

Disposal of obsolete electrical and electronic equipment (as practiced in the European Union and other European countries with dedicated collection systems).

This mark on the product, the packaging or the relevant documentation indicates that this product must not be treated like household waste. Instead this product should be disposed of at a suitable collection point for recycling of electrical and electronic appliances. Thus you contribute to avoid negative impact on the environment and people's health that could be caused by inappropriate disposal. Recycling of materials contributes to preserve our natural resources. For more information regarding recycling of this product, please contact your local administration, your waste collection service or the dealer / shop where you purchased this product.



Important notes

3. Important notes – Please read this chapter first

We congratulate you on your purchase of an ESU Switch Pilot decoder. This manual will guide you step by step through the features of SwitchPilot respectively SwitchPilot Extension.

Important warning:

Please read this manual carefully. Although the SwitchPilot has been designed as a robust device an incorrect connection may lead to faults or even to the destruction of the device. Avoid any “costly” experiments.



•The Switch Pilot is exclusively intended for use with model train layouts only. It may only be operated with the components listed here. Any other use is not permitted.



- Any wiring has to be carried out while power is disconnected.
- Any power supply must be protected by a fuse or circuit breaker to avoid any potential hazards such as burning cables in case of a short circuit. Only use transformers specifically designed for model trains that bear the VDE/EN marks.
- Never operate the SwitchPilot unattended. The SwitchPilot is not a (children's) toy.
- Adhere to the wiring principles as outlined in this manual for wiring any external components. Other circuitry may cause damage to the SwitchPilot.
- SwitchPilot is not water proof. It is not intended for outside use. If you use this product for exterior applications you do so at your own risk.
- Do not attempt to open your SwitchPilot module. Improper treatment may cause damage or destruction.

4. How this manual will help you

This manual was divided into a few chapters, which will gradually show you how to operate the products 51800, 51801 and 51802.

Chapter 5 includes an overview of the features of the single SwitchPilot decoders.

In chapter 7 we deal with the connection of your layout.

If you wish to adjust the factory settings of your decoder individually, just do so. In chapter 7 - 11, you will find detailed explanations about which settings are possible and how you can change them.

Statements about technical data can be found in chapter 16 as well as a list of all CVs assisted, if necessary.



Unless indicated otherwise, all statements exclusively refer to members of the SwitchPilot family. In case a decoder should not work with a special function, this will be mentioned explicitly.

5. Introduction – The SwitchPilot family

Copyright 1998 - 2007 by ESU electronic solutions ulm GmbH & Co KG. Electrical characteristics and dimensions are subject to change without prior notice. All rights reserved. ESU may not be held responsible for any damage or consequential loss or damage caused by inappropriate use of the product, abnormal operating conditions, unauthorized modifications to the product, etc. Not suitable for children under 14 years of age. Inappropriate use may result in injury due to sharp points and edges.

Märklin® is a registered trademark of the company Gebr. Märklin® und Cie. GmbH, Göppingen. All other trademarks are owned by the respective rights holder.

Due to our politics, ESU electronic solutions ulm GmbH & Co. KG keeps on developing our products steadily. Thus ESU reserves the right to carry out any kind of improvement or changes to the product without any announcement. A reproduction or duplication of this documentation has to be allowed by ESU.

5.1. Members of the SwitchPilot family

The ESU SwitchPilot decoders are especially optimized for stationary operation on your layout. Not matter if you wish to activate turnouts, signals, magnetic un-couplers, light bulbs and other stationary loads or even if you prefer a „state of the art servo motor: One of the SwitchPilot decoders will be quite useful for you, for sure.

The SwitchPilot decoders can be supplied with power either from the digital system or from an external AC- or DC-power source. Due to an installed full bridge rectification and backup memory you can do without any additional „power modules“.

All SwitchPilots are multi protocol capable and therefore can either be operated with command stations as per the Märklin@-Motorola@ system (e.g.: 6021, Central Station@) or with DCC compliant command stations.

SwitchPilot Decoders are able to control all current DCC programming modes and can be set up either on the main track or the programming track. Thanks to RailCom@ it is also possible to read out data on the main track. Some of the SwitchPilot decoders can be easily set up via a three-button, LED input unit. SwitchPilot decoders are shipped in a robust body and stand out due to their excellent price-performance ratio.

5.1.1. SwitchPilot overview

	SwitchPilot	SwitchPilot Servo
DCC mode	Ok	Ok
Motorola mode	Ok	Ok
DCC programming	Ok	Ok
4 double transistor outputs	per 1.5A	-
2 servo outputs	Ok	-
4 servo outputs	-	Ok
Feedback input	Ok	-
RailCom@	Ok	Ok
Input unit	-	Ok

5.1.2. SwitchPilot

The SwitchPilot is a universal decoder for users who mainly have double-solenoid motors installed, but would like to test the servo technology.

Hence the SwitchPilot has four outputs (1-4) for switching of up to 4 double-solenoid accessories (e.g. switches) or 8 accessories like uncouplers or light functions.

Each output can be programed individually for continuous or pulsed output with variable pulse duration or blinking.

Thus it is possible to connect light bulbs or LEDs without any additional relays. Automatic fading assures prototypical run-up and shut-down of signal lamps.

In addition two commercially available RC-servos for hobby applications may be wired directly to the SwitchPilot. Their speed and end position can be adapted as required.

Due to the integral DCC RailCom@ - transmitter it is possible to provide status feed back of the accessory to the command station. For instance an ESU ECoS command station can then display the manually activated change of status.

Of course the transistor outputs of SwitchPilot are electronically protected against overload and short circuit.

5.1.3. SwitchPilot Servo

The SwitchPilot Servo is a masterpiece among accessory decoders: it was specifically developed for controlling up to four remote-controlled servo motors. The SwitchPilot Servo activates these actuators very precisely and thus is able to control not only switches, but also other slow motion sequences.

The SwitchPilot Servo has a built-in „Power-on-Pulse-Suppression“ feature to eliminate or reduce the „twitching“ of the RC servo when current is being applied. The SwitchPilot Servo can also be used without a digital control unit. For this, eight push buttons can be connected to directly control the servo motor.

Thanks to the input unit of three buttons on the decoder, the servo state as well as speed can be set up pretty easily. You are using servos and are asking yourself which SwitchPilot should you use? If you are only controlling turnouts and light signals the SwitchPilot is the right decoder for you. If you would like to control railroad crossings or any other devices that might require slow motion, you should definitely use the SwitchPilot Servo.



5.1.4. SwitchPilot Extension

For operating motor drives for turnouts or for the polarization of the frogs you require a relay with potential free contacts. For this purpose each SwitchPilot can be connected to a SwitchPilot Extension which can be plugged into the side of the SwitchPilot and receive its power from it.

Each SwitchPilot Extension module has 4 by 2 relay outputs that are operated in parallel to the corresponding outputs of the SwitchPilot. This corresponds to the established k84-solution.

5.2. Features

5.2.1. Operational modes

All SwitchPilots are multi protocol capable and therefore can either be operated with command stations as per the Märklin®-Motorola® system (e.g.: 6021, Central Station®) or with DCC compliant command stations. For this SwitchPilot decoders must be contacted with solenoid accessory addresses. Therefore, operation with the Lokmaus 2 is not possible. The Lokmaus 2 does not send DCC commands to solenoid devices.



SwitchPilot

The SwitchPilot has a switch to select different operating modes. Thus you can easily set the desired mode. Therefore „programming“ is not necessary for most standard applications.



This switch only operates the four transistor output pairs 1 to 4. The servo outputs are not affected.

The operating mode switch is only for the use with Motorola control units to enable compatibility with Marklin controllers. If the SwitchPilot is used with the DCC protocol the operating mode switch needs to stay at the middle position (factory default).



5.2.1.1. k83 mode

SwitchPilot

When you push the slide into the k83 position then the outputs 1 to 4 will be switched to pulse operation regardless of the programed settings. The SwitchPilot behaves exactly like a Märklin® k83. Use this mode whenever you want to operate conventional solenoid drives.

5.2.1.2. k84 mode

SwitchPilot

In the k84-mode the outputs 1 to 4 will be set to variable regardless of any pre-programmed settings. The SwitchPilot behaves exactly like a Märklin® k84.

Use this mode to operate LEDs or light bulbs and whenever you do not require any specific programming.



All consumer loads are directly electrified by the SwitchPilot. You must not connect any external voltage!

5.2.1.3. User mode

SwitchPilot

The user mode is switched on by setting the switch for selecting the operating mode into the centre position. Only in this mode the outputs 1 to 4 will behave according to the software controlled settings.

This is the correct use to DCC format, k83 and k84-Modus are only meant for Motorola® command stations.

5.2.2. Transistor outputs

SwitchPilot

The SwitchPilot has a total of 8 transistor outputs that are grouped in four pairs 1 to 4. Each pair has two outputs, OutA and OutB. There are also two separate servo outputs.

The transistor outputs can be set to continuous, to pulsed power or to alternating blinking.

Pulsed output:

If the output is set to pulse operation it will be activated as soon as a command is received. At the same time a timer starts counting: the "on-time" (duration of pulse) is determined by a pre-programmed value. The output cannot be active for longer or shorter than this value. Should you let go of the button before the end of the first pulse then the output remains active until the pre-determined time has been reached. If you press the button

longer than the pre-determined pulse duration then the output is switched off even though the button is still pressed.

The limitation of the pulse duration helps avoid damage to solenoids.

The pulse duration can be set in such a way that the outputs are active as long as the button on the control panel is pressed. This operating mode is compatible with Märklin® k83 decoders.

Variable:

Pressing the appropriate button on the control panel (e.g.: "red" for Märklin® central units or „+“ for Lenz Digital Plus®) switches on the first output Out A. It remains on until the corresponding button for output Out B is activated. Out A and Out B work like a change over switch.

Logically this operating mode complies with the Märklin® k84 decoder. From every output EITHER Out A OR Out B is active. Both cannot be switched at the same time!



Alternating blinker:

In this mode the terminals Out A and Out B of an output will be activated alternately. This is quite useful for the blinking red lights at level crossings amongst others.

The "on-time" can be set in the same fashion as the pulse duration.

Subject to the pulse duration and also in continuous mode it may happen that several outputs are on at the same time. Please note that the total current of all connected loads must not exceed the total permitted load of the decoder, namely 3.0 A.



5.2.3. Servo outputs

SwitchPilot

SwitchPilot Servo

RC-servos can be connected to both SwitchPilot decoders. Compared to gear motors, servos are intelligent actuators with integrated intelligence which can move to the self-desired position and can also hold this state. In doing so, they force a different angle and speed. Will leverage against a force out, it controls the servo with all force against the angle constantly striving it

Relay outputs

should have to keep.

The nominal position will be set by a pulse line (orange on Graupner® servos, otherwise white). A constant voltage (4.8 V - 6V) completes the interface.

On the pulse line the servo expects in a time interval of 20 – 25ms a positive impulse with a length between 1.0ms and 2.0ms. The length of the pulse is directly proportional to the desired target position.



If the servo does not receive a signal, the motor gets no power, so it follows the mechanical forces on the lever.

Servos are available in various designs and sizes. They differ also in the gear box and actuator angle. There are, for example, servos to make wind sail adjustment, which makes several revolutions.

ESU offers with the servo motor (51803) a very small servo drive. This includes all the necessary parts for the switches or turnouts and you don't need to search for all these small parts.



Never try to turn the actuator of a servo by hand. The gears of the servo can be destroyed.

5.2.4. Relay outputs

SwitchPilot Extension

Outputs 1 through 4 each offer a relay output A and B which are switched together (DPDT, bi-stable). Each relay output corresponds with the transistor output of the SwitchPilot or the servo output of the SwitchPilot Servo: If output A is active (or servo setting A is reached) the terminals I and Com of the relay output are connected. Is output B on the SwitchPilot active (or servo setting B is reached) the terminals II and Com are connected.

5.2.5. Feedback inputs

SwitchPilot

Through RailCom® the SwitchPilot can send the current turnout position back to the digital control unit. For this the turnout needs to have the corresponding feedback contacts which must be connected to feedback contact input FB A and/or FB A. (See Figure 7.7 for details)

5.2.6. Push Button Inputs

SwitchPilot Servo

The SwitchPilot Servo can also be used without a digital system. The setting of servos 1 through 4 can be set with external push buttons. These could be toggle switches or push buttons known from the famous analog switch boards. (See Figure 13 for more details)

6. Connection to the digital system



We recommend setting all parameters of the SwitchPilot prior to installing the unit on your layout.

6.1. Connecting elements of the SwitchPilot

Figure 1 on the right shows the SwitchPilot and SwitchPilot Extension. Figure 1 shows the SwitchPilot together with the optional SwitchPilot Extension module.

- Wire turnouts, signals, un-couplers or similar devices to the terminals of the (transistor) outputs 1 to 4. The terminals **FB A** and **FB B** are used for status feedback of the device.
- This multi-pin connector serves to wire two commercially available RC-Servos (e. g.: Graupner®, Futaba® or ESU) and represents the outputs 5 and 6 of the SwitchPilot.

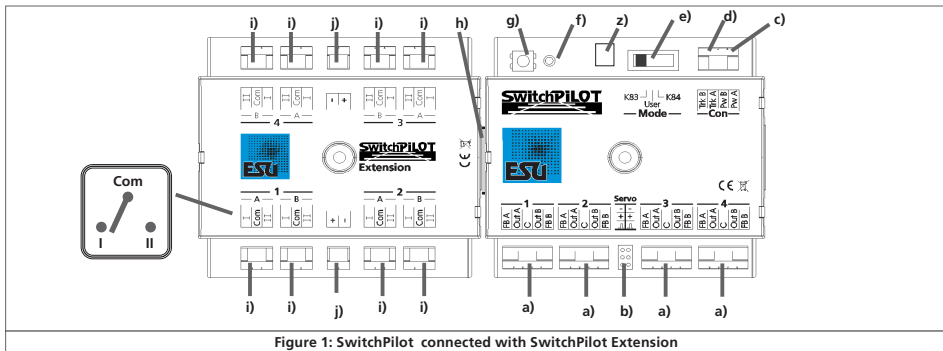


Figure 1: SwitchPilot connected with SwitchPilot Extension

- c) The power supply for the SwitchPilot and all the devices connected to it are wired to the terminals Pw A und Pw B. Both AC- and DC power supplies as well as the digital track voltage can be used.
- d) The screw terminals Trk A and Trk B connect the SwitchPilot with the power output of a command station (e.g. booster output) transmitting the digital commands.
- e) The switch controlling the operating modes allows you to select any of the supported modes such as k83, user mode and k84-mode (also compare with chapter 5.2.1).
- f) The LED in conjunction with the
- g) programming button helps you to set the digital address of the SwitchPilot. This process is described in chapter 8.
- h) The extension socket / plug connect the SwitchPilot and the SwitchPilot Extension mechanically and electrically.
- z) Decoder ground (optional) – needed for turnout operation

when using the SwitchPilot without a digital control unit.

6.2. Connecting elements of the SwitchPilot Extension

Figure 1 on the left shows the SwitchPilot Extension module

- i) The outputs marked 1 to 4 offer one relay output A and B that can be switched together. Each relay output corresponds with the respective output of the SwitchPilot: If the output Out A of the SwitchPilot is active the terminal 1 and COM of the relay output are also active. If the output Out B of the SwitchPilot is active then the terminals 2 and COM are electrically connected. Unlike the transistor outputs the relay outputs always work as variables.
- j) Terminal with ground and voltage power (U+) DC for the use of DC turnout motors like the Tortoise motor.

Connecting elements of SwitchPilot Servo

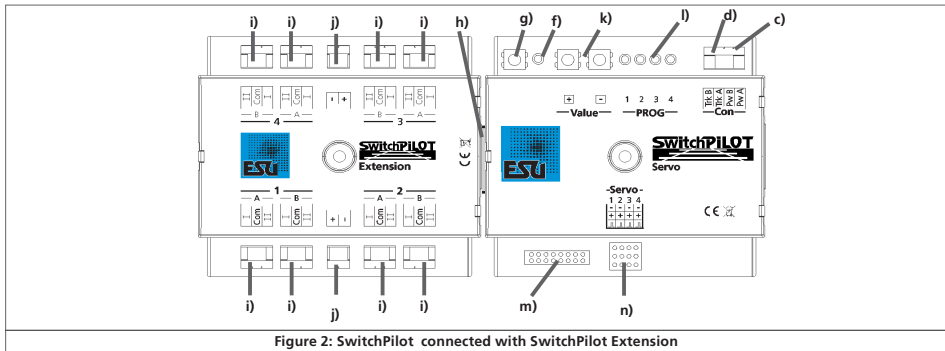


Figure 2: SwitchPilot connected with SwitchPilot Extension

6.3. Connecting elements of the SwitchPilot Extension

Figure 2 shows the SwitchPilot Servo with its optional SwitchPilot Extension module.

- The power supply for the SwitchPilot and all the devices connected to it are wired to the terminals Pw A and Pw B. Both AC- and DC power supplies as well as the digital track voltage can be used.
- The screw terminals Trk A and Trk B connect the SwitchPilot with the power output of a command station (e.g. booster output) transmitting the digital commands.
- The LED in conjunction with the
- programming button helps you to set the digital address of the SwitchPilot. This process is described in chapter 8. In addition, using the programming button or
- Input unit with a „+“ and „-“ buttons and monitor LEDs 1)

directly Servo end positions „A“ and „B“ and the rotation speed set.

- Monitor LEDs. During the setup of Servo end position and rotational speed on the input unit actively and show what servo is being edited. For more information about programming with the input unit, see section 10.4.
- This pin block serves to connect up to 8 external push buttons or toggle switches to operate the servo positions directly without digital control unit. Chapter 12 gives details.
- This pin block serves to connect four RC servo motors (eg ESU, Graupner®, Futaba®, etc.) and forms the outputs 1-4 of the SwitchPilot servo.
- Extension connector (female / male): Here is the connection between SwitchPilot Servo and SwitchPilot Extension unit.

6.4. Power supply from the digital system

For smaller layouts with only a few devices to be switched simultaneously the power supply of the digital system may be used.

The screw terminals **Pw A** and **Pw B** are wired in parallel to the

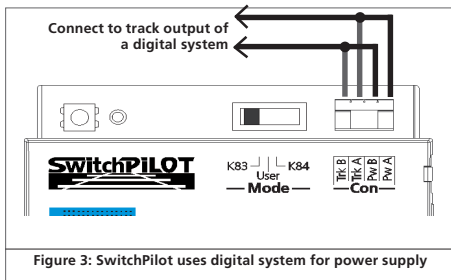


Figure 3: SwitchPilot uses digital system for power supply

terminal Trk A and Trk B.

Depending on the used solenoid devices the digital control unit might not be able to supply enough current for a safe operation. In this case an external transformer which can supply enough current for these solenoid devices needs to be connected to the Depending on the used solenoid devices the digital control unit might not be able to supply enough current for a safe operation. In this case an external transformer which can supply enough current for these solenoid devices needs to be connected to the SwitchPilot (see 6.5). When using certain solenoid devices (i.e. Märklin® K track turnouts or PECO® motors) you should consider an external supply of powerSwitchPilot (see 6.5).

6.5. Separate power supply

For larger layouts with many devices controlled by SwitchPilots and simultaneously active we recommend to utilise a separate power supply; in this manner the power for switching the devices is not drawn from the track and thus reduces the load on the digital system.

⚠ Only use commercially available equipment designed for model trains and also take note of the maximum voltage as stated in chapter 16 in order to avoid any potential damage.

⚠ This way of connecting cannot be used for programming on the programming track, compare chapter 7.2.2.1

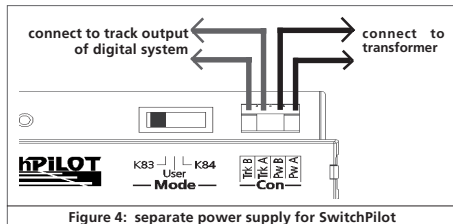


Figure 4: separate power supply for SwitchPilot

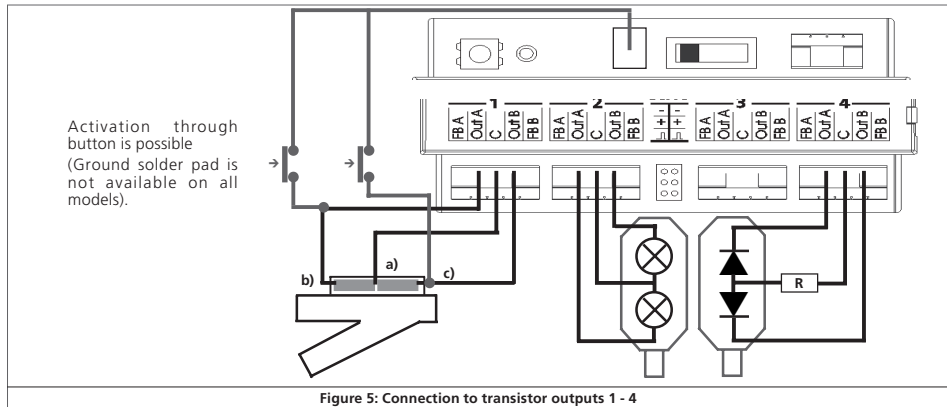
6.6. Wiring the SwitchPilot Extension

The SwitchPilot Extension module is connected by inserting it into the multi-pin connectors on the side of the SwitchPilot; push until the retaining clips make positive contact.

Please also refer to figure 1.

The internal logic and relays of the SwitchPilot Extension module receive power from the SwitchPilot.

How to wire transistor outputs



6.7. Wiring of transistor outputs

SwitchPilot

6.7.1. Connecting double-coil solenoids

You may use all commercially available double-coil solenoid drives by all major manufacturers with SwitchPilot. Figure 4 shows how to wire output 1:

- The common wire of the solenoid is wired to screw terminal C.
- The wire leading to the first coil is connected to terminal Out A.
- The wire leading to the second coil is connected to terminal Out B.

i Should the aspect shown on your control panel not be as desired (in other words: if straight and diverging route are exchanged) simply swap the wires between terminals Out A and Out B.

i SwitchPilot can also handle PECO® turnouts. However, their current consumption is so high that you must adjust the overload setting of the SwitchPilot. Please refer to chapter 9.3. for details.

i As shown in Figure 5 the double-coil turnouts can be switched with two optional push buttons without a digital command. The needed ground solder pad is not available on all SwitchPilot surfaces.

6.7.2. Wiring daylight signals and light bulbs or LEDs

If you use daylight signals with incandescent lamps (light bulbs) or LEDs you must set the corresponding output to continuous mode.

If the signal has incandescent lamps as shown for output 2 in figure 5 you may wire the lamps directly to the terminals of the SwitchPilot.

In order to limit the current for signals with LEDs a resistor must be wired in series with the LEDs. This is shown for output 4 in figure 5.

- ⚠ Please check if your signal already has a built-in resistor. Applying power without this resistor will destroy the LEDs immediately! If there is no resistor in place you must wire this resistor marked "R" in series to the LEDs. Subject to the supply voltage and the desired brightness of the signal the resistor should have a rating of about 1 kohm to 2.2 kohm.

- ⓘ The screw terminal C of each output has positive potential. Therefore the cathode of the LEDs must be connected to the terminals Out A respectively Out B.

6.7.3. Wiring a motor drive

SwitchPilot Extension

The SwitchPilot can operate motor drives for turnouts with the help of the SwitchPilot Extension. The direction of the motor is reversed by changing the polarity of the voltage on the motor terminals thus changing the position of the turnout or the aspect of a semaphore signal.

- ⚠ Only use motor drives with limit stop contacts to avoid overheating or a burnout of the motor. The relay outputs of the SwitchPilot Extension always connect the supply voltage to the load.

A motor drive is wired as shown in figure 6. It will be energized by the SwitchPilot.

- ⚠ Please take note of the permitted maximum supply voltage of your motor drive as stated in its manual.

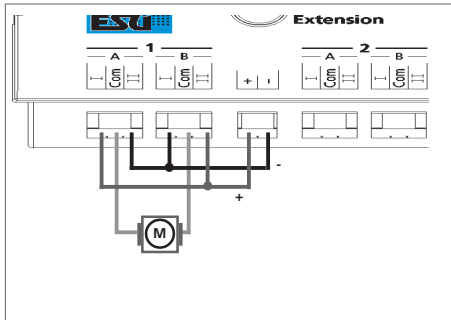


Figure 6: Motor drive used with SwitchPilot Extension

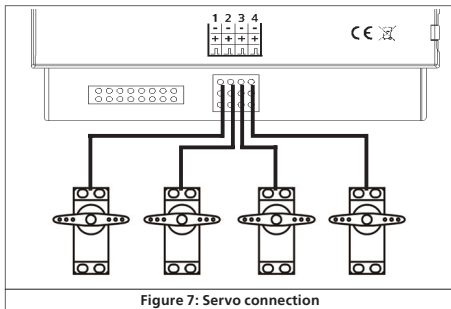


Figure 7: Servo connection

Wiring a servo

6.8. Wiring a servo

SwitchPilot

SwitchPilot Servo

All commercially available RC-servos for hobby applications may be used. They must have a three-pole terminal and operate on a positive pulse. The SwitchPilot (Servo) provides 5V to the servo. Figure 7 on page 13 shows the usual connection.

Simply insert the wire from the servo into the appropriate socket of the SwitchPilot (Servo). Generally the white or orange wire is used for the pulsed outputs of the servo.



Please refer to the wiring diagrams on the housing of the SwitchPilot. Incorrect connections may destroy either the servo or the SwitchPilot!

The servo outputs can be configured individually as you can see in chapter 10.

6.9. Wiring feedback contacts

SwitchPilot

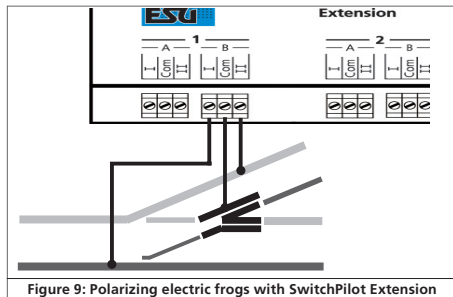
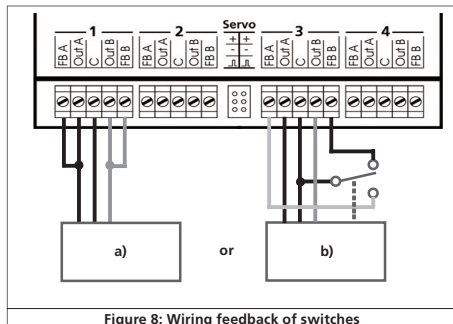
The SwitchPilot can report the actual aspect or position of the turnout to the command station via RailCom®. The turnout must have some extra contacts for this. Figure 6 on page 9 illustrates this situation:

- a) Connecting a motor of a turnout with limit stop contacts. Connect the terminals Out A with FB A and Out B with FB B.
- b) Connecting a motor with separate feedback contacts: connect the feedback contacts with terminal FB A respectively FB B and the common wire of the feedback contacts to terminal C.



How the status (feedback) is displayed depends on your command station. The ESU ECoS®-command station can display the status on the turnout control panel with software 1.1.0 and higher.

Further information about feedback of switches via RailCom® can be found in chapter 11.



Decoder settings (programming)

6.10. Polarizing electric frogs

SwitchPilot Extension

You may polarize (supply power of the correct polarity) to the electro-frog of your turnout (compare figure 9).

- i** If you would like to use a servo with your turnout it is most often necessary to choose the exact timing in such a way that the relays only switches when the servo is positioned in the middle between setting A and B. This way shorts are being prevented. See Chapter 13 for more details.

7. Decoder settings (programming)

Chapter 7 is about changing the settings of the SwitchPilot decoder. In case you are not familiar with the CVs please take some time to read through the sometimes very complex explanations.

After an introduction into the world of parameters in Chapter 7.1, Chapter 7.2 explains how to change the parameters with different DCC control units.

Chapters 8 through 11 explain which parameters influence the behavior of the SwitchPilot decoder.

7.1. Changeable decoder settings

Certain capabilities of the SwitchPilot decoder like the amount of function outputs or the maximum current load are physically limited through hardware and are not changeable. However, there are still plenty of possibilities to change the behavior of the SwitchPilot decoder through software changes. For each individual parameter there are one or more storage locations within the decoder in which numbers or letters can be stored. You can think of these storage locations as index cards which are kept in a large file cabinet. In order to find the individual index cards each one has a number or description with the property of the card, e.g. „Loco Address“ or „Maximum Speed“.

Now imagine that those cards can be written on with a pencil; changes are always possible through erasing and writing. Not all „cards“ can be written on. Certain pieces of information like the manufacturer identification for ESU are hardcoded. The content of these storage locations can be chosen by you and is being read and considered by the decoder. You can fill the storage locations with any value through a procedure that is also known as programming.

7.1.1. Configuration Variables (CV)

All SwitchPilot decoders follow the CV concept which was developed in the United States. The name CV (Configuration Variable) is derived from the fact that the memory cells being described above are not only variable but can also configure the behavior of the decoder.

7.1.1.1. Standardization

The NMRA (National Model Railroad Association) has specified which CV controls what function in a decoder. The DCC norm describes the CVs with numbers whereby the most important ones are given. Thereby the handling of CVs is simplified for the user since decoders of many manufacturers follow this standardization and the learned handling of CVs can be applied everywhere. Within the DCC CV concept number values between 0 and 255 can be written into CVs. Each CV consists of exactly one number. While the position (CV number) has been predetermined the actual range of values can vary. Not all CVs need to accept values between 0 and 255. Allowed values for the SwitchPilot decoder are shown in the list in Chapter 16.



7.1.1.2. Bits and Bytes

Most CVs contain numerical values: CV 8 for example contains the manufacturer's identification. This one can range from 1 to 255. Other CVs can be understood as a collection point of different switches which together control different functions (most often turning on or off). Good examples are CVs 28 and 29: The intended value for this CV needs to be calculated. This value depends on the desired parameter. Take a look at the table in Chapter 17 and its description for CV34: First decide which option needs to be turned on or off. In the value column are two numbers for each option. If the option is turned off the value is set 0, otherwise a number between 1 and 8. Add those two numerical values for this specific option and you will get the value which needs to be written into the CV.

Example:

Assuming you would like to activate the SwitchPilot's „zoom“ function on outputs 1 and 3, the value of CV 34 needs to be set 5 ($1 + 0 + 4 + 0 = 5$).

7.2. Programming with DCC systems

SwitchPilot decoders understand all programming methods of the NMRA, so in addition to the programming track modes (Direct Mode, Register Mode, Page Mode) also the main track programming „POM“ (programming on the main). With POM you can comfortably program your decoder without having take your locomotive off the track. For this the central unit must contact the decoder with its specific address, for example: „Decoder 10, write value 1 into CV 3“. The decoder address must be known. The reading of CV values is not possible in this case.

It is possible to read out CVs on the main track with RailCom®. More information can be found in chapter 11.

CV values can be read and set on the programming track – a suitable DCC system provided. Furthermore you can program decoders on the programming track without knowing the decoder address since the central unit uses commands like „Write value 1 to CV3!“ Each decoder that receives this command will also execute it.

ESU counts the bits from 0 to 7 as specified in the DCC norm while some manufacturers (e.g. Lenz) count the bits from 1 to 8. Please keep this in mind when programming our decoders with such systems.

7.2.1. Programming on the main track

The SwitchPilot can remain installed on your layout during the programming. In order for the main track programming to work your digital system must also understand „Programming on the Main: (POM) for solenoid devices. In addition you must know the decoder address of your SwitchPilot decoder. Please make sure to carefully read Chapter 8 so you understand the difference between turnout number and decoder address. Thanks to the built-in RailCom® technology, ECoS owners with firmware 1.1.0 or later can program the SwitchPilot while it is installed on the layout. More can be find in chapter 11.

7.2.2. Programming on the programming track

For programming specific parameters of the decoder outputs the SwitchPilot has to be programmed on the programming track. This is most practical prior to installation on the layout.

7.2.2.1. Connecting to the programming track

SwitchPilot

For programming please connect the SwitchPilot as shown in figure 10 to your digital system. In this instance the power must be supplied from the command station.

The SwitchPilot "understands" all relevant DCC programming modes. It is best to program it in DCC Direct Mode.

In order to be able to read out any data you must connect a load to output 1 Out A that draws more than 60 mA, for instance a light bulb or a 180 Ohm / 1 Watt resistor.

SwitchPilot Servo

For programming please connect the SwitchPilot as shown in figure 11 to your digital system. In this instance the power must be supplied from the command station.

The SwitchPilot Servo "understands" all relevant DCC programming modes. It is best to program it in DCC Direct Mode. A load resistance with 180 ohm is already built in. The reading of CVs should function with all DCC conformal central units and was tested with ESU ECoS, Bachmann® Dynamis ProBox®, Uhlenbrock® Intellibox® and Lenz® Digital Plus V3®. Unfortunately, Digitrax® units do not supply enough current on the programming output, ZIMO® units sometimes report an over current. Therefore, use the main track programming 7.2.1.



7.3. Programming with Märklin® central stations

A direct programming possibility with a Märklin central unit (e.g. 6021, Mobile Station®, Central Station®) is not possible due to the missing DCC format. However, the most important properties can still be changed.

SwitchPilot

The desired turnout numbers can be set directly with buttons. Chapter 8.4 has more information. By means of the operating mode switch you can choose between k83 or k84 mode (find more 5.2.1).

connect to programming track output of digital system

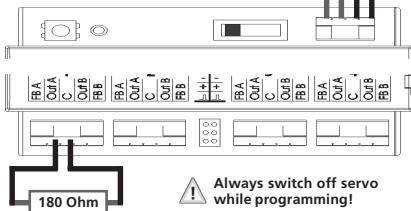


Figure 10: SwitchPilot connection to programming track

connect to programming track output of digital system



Figure 11: SwitchPilot Servo connection to programming track

SwitchPilot Servo

The desired turnout numbers can be set directly with buttons. Chapter 8.4 has more information. The end positions and speeds of all servos can be changed with the help of the input unit. See Chapter 10.4.



For all options we recommend the use of the ESU Lokprogramer.

7.4. Programming with the ESU LokProgrammer

Owners of the ESU LokProgrammer device are able to set up the SwitchPilot decoders very comfortably. Please always use the latest computer software. It can be downloaded from our website without any charge.

8. Address settings

The numbers of the outputs of the SwitchPilot can be assigned freely – within limits. Unfortunately, the DCC norm is not comprehensible that easily so therefore we would like to explain it here in detail and also have you very thoroughly work through Chapter 8 in case you are not yet familiar with it.

8.1. Turnout numbers

The outputs of the SwitchPilot are numbered:

The SwitchPilot offers a total of 6 outputs:

Outputs 1 through 4 are double transistor outputs, outputs 5 through 6 are servo outputs.

All available turnouts are numbered in all DCC or Märklin® digital systems. The number of available turnout numbers is limited:

Motorola®: Turnout numbers 1 – 256

DCC: Turnout numbers 1 – 2040 Servo outputs:

In DCC or Märklin® Digital systems the available turnouts are numbered. The number of available choices are limited numbers:

Motorola®: Turnout numbers 1 - 256

DCC: Turnout numbers 1 - 2040

All turnout numbers are summarized by addresses. Turnouts 1 – 4 form the first address, turnouts 5 – 8 the second one, etc. In order to function properly each SwitchPilot must know the address that is assigned to it.

SwitchPilot

Since the SwitchPilot has a total of six outputs two addresses can be assigned to it: address 1 is responsible for the transistor outputs 1 – 4, address 2 is for the servo outputs 5 – 6. This logic means that the outputs (and therefore the turnout numbers) of the SwitchPilot always start at the beginning of an address on one hand, and that all outputs stay together in one block on the other hand.



8.2. Decoder address

The desired address is divided internally and put into CV 1 and CV 9. Please never mix up decoder address and the turnout number resulting from it. Most digital systems (incl. the ECoS) show the turnout numbers instead of the decoder addresses on the control panels.



SwitchPilot

The second turnout address for the servo outputs 5 - 6 of the SwitchPilot is stored in CV 35 and CV 36.

8.2.1. Schedule of turnout numbers and addresses

The relation between turnout numbers and turnout addresses is explained in Figure 12 on page 19: The desired turnout numbers are derived from the chosen turnout address. Only the first 256 turnouts are accessible when using Motorola® central units.

It is not possible to assign turnout numbers above the limit of 4 to a SwitchPilot. For example, it would not be possible to assign turnout numbers 4, 5, 6, or 7 to a SwitchPilot servo since those are above the address limit. Please keep this in mind when numbering your turnouts.



The table only shows the first 552 turnout numbers. 2040 turnouts are possible in DCC operation. A complete table can be found on our web site.

Figure 12: Turnout number, addresses & CVs of the first 552 tumouts

Turnout number	Address	CV1	CV9				
1	2	3	4	1	2	1	0
5	6	7	8	2	2	0	0
9	10	11	12	3	3	0	0
13	14	15	16	4	4	0	0
17	18	19	20	5	5	0	0
21	22	23	24	6	6	0	0
25	26	27	28	7	7	0	0
29	30	31	32	8	8	0	0
33	34	35	36	9	9	0	0
37	38	39	40	10	10	0	0
41	42	43	44	11	11	0	0
45	46	47	48	12	12	0	0
49	50	51	52	13	13	0	0
53	54	55	56	14	14	0	0
57	58	59	60	15	15	0	0
61	62	63	64	16	16	0	0
65	66	67	68	17	17	0	0
69	70	71	72	18	18	0	0
73	74	75	76	19	19	0	0
77	78	79	80	20	20	0	0
81	82	83	84	21	21	0	0
85	86	87	88	22	22	0	0
89	90	91	92	23	23	0	0
93	94	95	96	24	24	0	0
97	98	99	100	25	25	0	0
101	102	103	104	26	26	0	0
105	106	107	108	27	27	0	0
109	110	111	112	28	28	0	0
113	114	115	116	29	29	0	0
117	118	119	120	30	30	0	0
121	122	123	124	31	31	0	0
125	126	127	128	32	32	0	0
129	130	131	132	33	33	0	0
133	134	135	136	34	34	0	0
137	138	139	140	35	35	0	0
141	142	143	144	36	36	0	0
145	146	147	148	37	37	0	0
149	150	151	152	38	38	0	0
153	154	155	156	39	39	0	0
157	158	159	160	40	40	0	0
161	162	163	164	41	41	0	0
165	166	167	168	42	42	0	0
169	170	171	172	43	43	0	0
173	174	175	176	44	44	0	0
177	178	179	180	45	45	0	0
181	182	183	184	46	46	0	0

Turnout number	Address	CV1	CV9				
185	186	187	188	47	47	0	0
189	190	191	192	48	48	0	0
193	194	195	196	49	49	0	0
197	198	199	200	50	50	0	0
201	202	203	204	51	51	0	0
205	206	207	208	52	52	0	0
209	210	211	212	53	53	0	0
213	214	215	216	54	54	0	0
217	218	219	220	55	55	0	0
221	222	223	224	56	56	0	0
225	226	227	228	57	57	0	0
229	230	231	232	58	58	0	0
233	234	235	236	59	59	0	0
237	238	239	240	60	60	0	0
241	242	243	244	61	61	0	0
245	246	247	248	62	62	0	0
249	250	251	252	63	63	0	0
253	254	255	256	64	0	1	1
257	258	259	260	65	1	1	1
261	262	263	264	66	2	1	1
265	266	267	268	67	3	1	1
269	270	271	272	68	4	1	1
273	274	275	276	69	5	1	1
277	278	279	280	70	6	1	1
281	282	283	284	71	7	1	1
285	286	287	288	72	8	1	1
289	290	291	292	73	9	1	1
293	294	295	296	74	10	1	1
297	298	299	300	75	11	1	1
301	302	303	304	76	12	1	1
305	306	307	308	77	13	1	1
309	310	311	312	78	14	1	1
313	314	315	316	79	15	1	1
317	318	319	320	80	16	1	1
321	322	323	324	81	17	1	1
325	326	327	328	82	18	1	1
329	330	331	332	83	19	1	1
333	334	335	336	84	20	1	1
337	338	339	340	85	21	1	1
341	342	343	344	86	22	1	1
345	346	347	348	87	23	1	1
349	350	351	352	88	24	1	1
353	354	355	356	89	25	1	1
357	358	359	360	90	26	1	1
361	362	363	364	91	27	1	1
365	366	367	368	92	28	1	1

Turnout number	Address	CV1	CV9				
369	370	371	372	93	29	1	1
373	374	375	376	94	30	1	1
377	378	379	380	95	31	1	1
381	382	383	384	96	32	1	1
385	386	387	388	97	33	1	1
389	390	391	392	98	34	1	1
393	394	395	396	99	35	1	1
397	398	399	400	100	36	1	1
401	402	403	404	101	37	1	1
405	406	407	408	102	38	1	1
409	410	411	412	103	39	1	1
413	414	415	416	104	40	1	1
417	418	419	420	105	41	1	1
421	422	423	424	106	42	1	1
425	426	427	428	107	43	1	1
429	430	431	432	108	44	1	1
433	434	435	436	109	45	1	1
437	438	439	440	110	46	1	1
441	442	443	444	111	47	1	1
445	446	447	448	112	48	1	1
449	450	451	452	113	49	1	1
453	454	455	456	114	50	1	1
457	458	459	460	115	51	1	1
461	462	463	464	116	52	1	1
465	466	467	468	117	53	1	1
469	470	471	472	118	54	1	1
473	474	475	476	119	55	1	1
477	478	479	480	120	56	1	1
481	482	483	484	121	57	1	1
485	486	487	488	122	58	1	1
489	490	491	492	123	59	1	1
493	494	495	496	124	60	1	1
497	498	499	500	125	61	1	1
501	502	503	504	126	62	1	1
505	506	507	508	127	63	1	1
509	510	511	512	128	0	2	2
513	514	515	516	129	1	2	2
517	518	519	520	130	2	2	2
521	522	523	524	131	3	2	2
525	526	527	528	132	4	2	2
529	530	531	532	133	5	2	2
533	534	535	536	134	6	2	2
537	538	539	540	135	7	2	2
541	542	543	544	136	8	2	2
545	546	547	548	137	9	2	2
549	550	551	552	138	10	2	2

8.3. Factory settings

SwitchPilot

The four transistor outputs 1 to 4 react ex works to the turnout numbers 1 to 4 with all outputs set to single pulse mode with 520 msec pulse duration. Address „1“ belongs to the SwitchPilot.

The servo outputs 5 – 6 are deactivated ex works. There is no second address to be allocated.

SwitchPilot Servo

The four servo outputs 1 to 4 react ex works to the turnout numbers 1 to 4 and require 3.75 sec for a full movement with both end positions being about 50% of the possible distance of the starting point. Address „1“ belongs to the SwitchPilot Servo.

8.4. Programming addresses with the programming button

You may program the addresses with the help of the programming button without any complicated procedure on the programming track. We recommend to proceed as follows:



You must use this method if you work with a Märklin® Motorola® central unit (6021, Central Station®) or if you want to change the addresses of the turnouts after installation of the decoder on your layout.

8.4.1. First address for outputs 1 – 4

SwitchPilot

SwitchPilot Servo

1. Select the turnout number on your digital system that you want to assign to the first output of your SwitchPilot. Proceed as per the instructions of your handheld throttle or your command station as if you wanted to switch the respective turnout (for ECoS users: refer to chapter 13 in the ECoS manual).
2. Turn on the power supply of your layout.
3. Press the programming button and hold it long enough until (after about two seconds) the LED blinks as follows: *short, pause, short, pause*, and so on.

4. You may now release the button, the decoder is in learning mode.
 5. Now switch the turnout you have selected in step 1 on your handheld controller or your command station. It is immaterial whether you switch from “straight” to “diverging route” or vice versa.
 6. Once the decoder has “understood” the address it will confirm this by lighting up the LED for one second.
 7. Then the SwitchPilot goes back to the normal operating mode and the LED extinguishes.
- Should you have programmed another turnout instead of the first one of the group of four the correct group will be automatically detected and programmed.

8.4.2. Second address for outputs 5 - 6

SwitchPilot

The second address is used for the (servo) outputs 5 and 6. Always select turnout numbers at the beginning of a group of four, e.g.: 1 and 2, 5 and 6, 9 and 10, 13 and 14, etc.

1. Select the turnout number with your digital system that you would like to assign to output 5 (first servo) of the SwitchPilot. Proceed as per the instructions of your handheld controller or your command station as if you wanted to switch this particular turnout (ECoS users please also refer to chapter 13 in the manual).
2. Turn on the power for your layout.
3. Press the programming button and hold it down until (after about four seconds) the LED blinks as follows: *short, short, pause, short, short, pause*, and so on.
4. Then you may release the button; the decoder is now in learning mode.
5. Switch the turnout you have selected in step 1 with your hand held or the command station. It is immaterial if you switch from “straight” to “diverging route” or vice versa.
6. If the decoder has “understood” the address it confirms this by the LED lighting up for about one second.
7. The SwitchPilot then goes back to the normal operating mode and the LED extinguishes.

9. Parameters of the transistor outputs

SwitchPilot

In order to set the parameters of the transistor outputs 1 to 4 each is assigned to a configuration-CV: CV 3 is responsible for output 1, CV 4 for output 2, CV 5 for output 3 and CV 6 for output 4.

9.1. Configuration of an output with variable duration (k83)

Write the value 0 in the appropriate CV. The output will then behave as follows: the output is active as long as the corresponding button on the control panel is pressed. Once you release the button the output will switch off immediately. This is useful for un-couplers amongst others.

9.2. Output configuration to pulsed output with fixed pulse duration

Write a value between 2 and 31 into the configuration-CV if you wish the output to generate a pulse of a pre-determined duration regardless of how long you actually press the button. This value describes the duration of the on-period as a multiple of 65 msec. The higher this value, the longer is the on-period.

Example:

You want to have an output lasting about one second. Write the value 15 into the CV ($16 * 65 \text{ msec} = 975 \text{ msec}$)

9.3. Configuration of an output for PECO solenoid drives

If you wire a PECO solenoid drive to an output write the value 1 into the corresponding configuration-CV. This adjusts the overload (over current) protection to the higher values for PECO solenoid drives.



If you would like to use PECO turnout motors you have to use an external transformer to supply the SwitchPilot with enough current. See section 6.5

9.4. Configuration of an output as alternating blinker

If you wish to set the two transistor outputs into the alternating blinking mode (for instance for levels crossings) then write a value

between 32 and 64 into the CV. This value describes the duration of the on-period (blinking) as a multiple of 130 msec.

9.5. Configuration of an output for continuous operation (k84)

If you wish to alternately activate one of the transistor outputs until the other one is switched on then write the value 64 into the configuration-CV.

9.6. Configuring the „zoom“-effect

The lights of prototype daylighting signals do not come on within a split second but rather take a few moments until they reach full output respectively until they extinguish fully. This effect can be simulated by programming the “zoom“- function to each output in CV 34. Please refer to the table in chapter 17.

10. Features of servo outputs

Two end positions „A“ and „B“ as well as a turning speed can be assigned to each servo output.

If your digital command station supports programming on the Main (POM) you may fine tune these CVs in normal operating mode. Change the settings of the relevant CVs step by step until the servo reaches the desired end position.

In case you are using a SwitchPilot Servo we recommend using the input unit to set the end positions. See Chapter 10.4.

10.1. Configuration of servo end position „A“

The end position „A“ of the servo can be set in CV 38, 41, 44 and 47. The precise value depends on the type of servo and the installation. This can only be established by experimenting.

10.2. Configuration of servo end position „B“

The end position „B“ of the servo can be set in CV 39,42,45 and 48. The precise value depends on the type of servo and the installation. This can only be established by experimenting.

10.3. Configuration of servo speed

For each one of the servo outputs you can set the running time of the servo from point A to B to model prototypical motions.

The CVs 37, 40, 43 and 46 are responsible for this. Possible values range from 0 to 63 as a multiple of 0.25 sec. For example, the servo takes about $15 * 0.25 = 3.75$ seconds to reach the other end position at the factory default setting of 15.

Higher values may lead to a slower movement and may cause the servo to jerk or stutter since it cannot keep up very low revolutions at a constant speed. In this case reduce the value or use a servo with a different gear ratio and slower movement. Of course, the SwitchPilot cannot change the mechanical properties of the servo.

The SwitchPilot Servo can internally control the speed steps more precisely than the SwitchPilot. Use the SwitchPilot Servo for switching tasks that depend on slowly running servos.

10.4. Configuration of servo outputs with input unit

SwitchPilot Servo

For the configuration of the servo output without a digital control unit the SwitchPilot Servo has a programming panel with three push buttons and five LEDs (see figure 13):

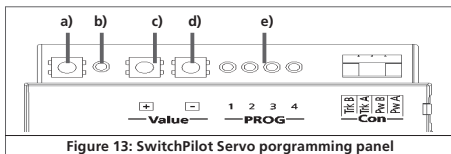


Figure 13: SwitchPilot Servo programming panel

- a) programming button
- b) programming LED
- c) „+“ button
- d) „-“ button
- e) LED servo 1 - 4

All changes are executed immediately when using the input unit for configuration. To test your settings all servos should be properly connected and installed. The configuration of the four servo outputs is done in a pre-set sequence:

Start ⇒

- Servo 1: Position „A“ ⇒ Position „B“ ⇒ rotational speed ⇒
- Servo 2: Position „A“ ⇒ Position „B“ ⇒ rotational speed ⇒
- Servo 3: Position „A“ ⇒ Position „B“ ⇒ rotational speed ⇒
- Servo 4: Position „A“ ⇒ Position „B“ ⇒ rotational speed ⇒
- ⇒ Finish

The programming sequence has to be started as follows:

- 1) Press the programming button and hold it long enough until (after about two seconds) the LED blinks as follows: *short, short, pause, short, short, pause* and so on.
- 2) You may now release the button, the decoder is in learning mode. The servo 1 LED lights up constantly. Servo 1 moves to the current end position „A“.
- 3) Use the + and – buttons to set the desired end position „A“ for servo 1. The servo will immediately move to that position.
- 4) Confirm the new position by pressing the programming button a)
- 5) Servo 1 will now move to the current end position „B“.
- 6) Use the + and – buttons to set the desired end position „B“ for servo 1. The servo will immediately move to that position.
- 7) Confirm the new position by pressing the programming button a)

- Servo 1 will now continuously move back and forth between end positions „A“ and „B“.
- Use the + and – buttons to set the desired turning speed. The servo will immediately adjust its speed.
- Confirm the new speed by pressing the programming button a)
- The servo 1 LED turns off and the servo 2 LED lights up which means that servo 2 can now be configured. Follow steps 3 through 10 again until all servos have been configured.

i If you do not want to change a certain value you can simply confirm it by pressing the programming button and jump to the next programming step. The configuration changes will be permanently saved into the appropriate CVs of the SwitchPilot Servo.

11. RailCom®

RailCom® is a technology which was developed by the company Lenz Elektronik, Giessen for transmitting information from the decoder back to the digital control unit. The past DCC system could only transmit data from the control unit to the decoder but could never verify whether the data actually arrived or not. The following information can be sent from the SwitchPilot decoder to the central unit:

CV Information: The decoder can return all CV values to the central unit via Railcom®. A programming track will not be necessary in the future.

11.1. How to activate RailCom®

All SwitchPilot decoders are capable of using Railcom®. It is disabled by factory default and can be enabled as follows:

Set CV 29 bit 3.

Write the value 6 into CV 28.

i The first time the Railcom® function is being enabled it should be done on the programming track (see sections 7 and 8). After Railcom® has been turned on you can directly continue with the other programming steps.

11.2. How to read out CVs with RailCom® and ESU ECoS

After a successful Railcom® activation you can directly read CVs from the main track – as long as this is being supported by your central unit. The approach to do this for the ESU ECoS (firmware 1.1.0 or later) is displayed here. In our example a decoder which is configured for turnout numbers 13 – 16 needs to be read. The turnout numbers 13 – 16 correspond to decoder address 4. (See section 8.1)

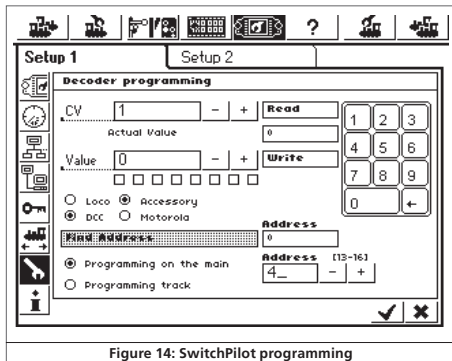


Figure 14: SwitchPilot programming

- Go to the general programming menu of the ECoS
- Choose „Main Track Programming, „DCC“, and then „Solenoid Accessories“
- Enter the decoder address of the SwitchPilot on the bottom right. In our example, this is number 4.
- Enter the number of the CV that you would like to read in the CV field
- Press the „Read“ button
- The read value must be displayed immediately.

11.2. Feedback of turnout position with the ECoS

As mentioned in section 5.2.5 the current position of a turnout can be displayed at the ECoS at any time. In our example, a turnout with the number 14 needs to be set up in the ECoS. Proceed as follows:

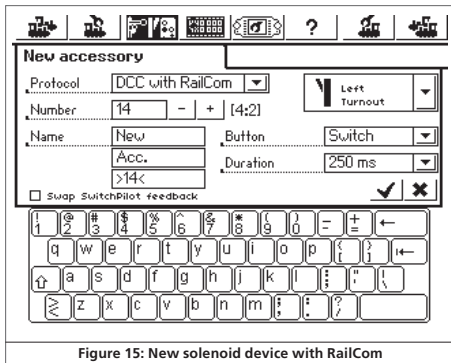


Figure 15: New solenoid device with RailCom

- Go to the menu „New Solenoid Device“
- Under data format choose „DCC with RailCom®“
- Choose the desired symbol and enter the turnout number (in our case 14)
- Now connect the solenoid device with a control panel as described in the ECoS manual in section 13.3.

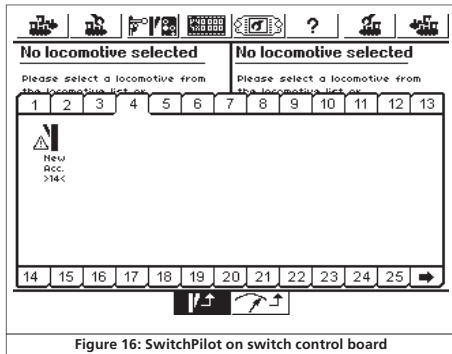


Figure 16: SwitchPilot on switch control board

- If the current setting does not coincide with the desired setting, it will be indicated with a small exclamation mark.

Depending on the setup of your feedback modules it might be possible that feedback lines are switched. If you do not want to rewire those you can simply check the box „Swap SwitchPilot Feedback“. If the SwitchPilot has not yet been programmed for turnout numbers 13 – 16 you can now continue as shown in section 8.2.1.

Direct Switching with push button inputs

12. Direct Switching with push button inputs

SwitchPilot Servo

The SwitchPilot Servo enables the switching of the four servo outputs without the use of a digital system. Therefore it can be used on traditional analog layouts. The desired servo setting will be set via eight push buttons (4 servos with two positions each). Connect your buttons as shown in figure 17:

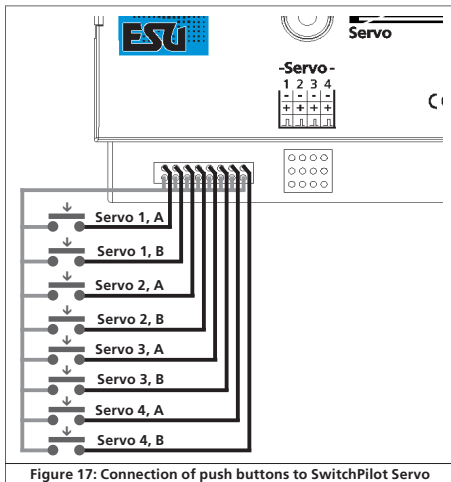


Figure 17: Connection of push buttons to SwitchPilot Servo

- the buttons need to be potential-free
- switching only requires a short impulse
- because of the internal switching only one button can be pressed at the same time, otherwise the pressing of the buttons will not be recognized correctly

13. Options for SwitchPilot Extension

The behavior of an optional SwitchPilot Extension module can be modified with CV 49.

13.1. Time of switching

Normally the relays of the SwitchPilot Extension module switch immediately after receiving the command. But this can lead to a short at the frog polarization because the turnout tongue remains at the previous position for a while. The behavior can be changed in such a way that the relays only switch in the middle between positions A and B. The exact switching point of the relays depends on the desired switching time of the servo.

SwitchPilot Servo

Responsible is CV 49. Set the appropriate bit for each relay output that needs to be switched delayed. See table in section 17 for details.

13.2. Assignment of Relays

SwitchPilot

The relays of the SwitchPilot Extension module switch together with transistor outputs 1 – 4 by factory default. In a few cases you might want to switch the relays together with servo outputs 5 – 6 (e.g. for frog polarization). Therefore, it is possible with CV 49 to assign the secondary address (servo outputs 5 – 6) to each relay output.

Decoder reset

Example:

You would like to operate relay outputs 1 and 2 together with servo outputs 5 – 6 but relay outputs 3 and 4 should be switched in parallel to transistor outputs 3 – 4. Therefore, write the value 3 into CV 49. As soon as you want to switch the relay outputs together with the servo outputs the time of switching will be delayed automatically.



14. Decoder reset

You can reset to the factory defaults at any time:

14.1. With DCC systems

Write value 08 into CV 08.

Please keep in mind that the reading of CV 08 will show the value 151 (manufacturer ID of ESU). Writing the value 8 to CV 8 is a special case. Therefore, a few central units show „err02“ or similar errors. However, the SwitchPilot still accepts the command.



14.2. With programming button

- Disconnect the power to the SwitchPilot decoder
- Press and hold the programming button at the SwitchPilot
- Reconnect the power to the SwitchPilot. The decoder will be reset to factory defaults.
- Release the programming button.

14.3. With ESU LokProgrammer

In the menu „Edit CVs“, option „Read/Write CVs“ write the value 08 into CV 08.

15. Support and assistance

Your model train dealer or hobby shop is your competent partner for all questions regarding your SwitchPilot decoder. In fact he is your competent partner for all questions around model trains. Of course, you may also contact us directly. For enquiries please use either email or fax (don't forget to provide your own fax-no. or email address) and we will reply within a few days.

Please call our hotline only in case of complex enquiries that can't be dealt with by email or fax. The hotline is often very busy and you may encounter delays. Rather send an email or fax and also check our website for more information. You will find many hints under "Support / FAQ" and even feedback from other users that may help you with your particular question.

Of course we will always assist you; please contact us at:

Contact Germany:

Phone: ++49 (0) 700 – 56576863 (Tue&Wed 10am -12am)

Fax : ++49 (0) 700 - 37872538

Email: support@loksound.de

Warranty address: ESU GmbH & Co. KG
- technischer Support -
Industriestrasse 5
D-89004 Ulm

Contact USA:

Phone: +++1-320-202-0865

Fax : +++1-320-202-0867

Email: support@loksound.com

Warranty address: ESU LLC
815 60th Ave SE
56304 St Cloud

www.esu.eu

16. Technical data

16.1. Technical data SwitchPilot

Operating modes:

- NMRA/DCC „Accessory Decoder“ compatible. Address range from 1 - 2044
 - Märklin® Motorola® compatible, up to turnout number 384. k83 compatible. k84 logic
 - Power supply by digital command station or separate DC- or AC-power supply.
 - Maximum supply voltage: 18V AC or 24V smooth DC.
- Transistor outputs 1 to 4:
- 4 outputs with two transistors each, each with 1.5A continuous, 2.0A peak (20 seconds).
 - Total maximum load of device: 2.0A continuous, 3.0A peak (20 seconds)
 - Overload and short circuit protection for outputs.
 - Switching time of each output between 0.06 sec to 2.00 sec or adjustable for variable. Optional blinking mode and „zoom“-effect for lighting effects.

Servo outputs:

- 2 Servo outputs for RC-servos (e.g.: Graupner® JR, Futaba® or ESU), adjustable pulse duration between 1.0 msec and 2.0 msec, positive pulse. Adjustable speed and end positions.
- Power supply for the servos with 5V stabilised supply. Maximum current draw of the servo: 250 mA continuous, 500 mA peak (20 seconds)

Feed back:

- Integral RailCom® status feedback reports turnout status via the tracks and can be displayed on ECos (amongst others).

Dimensions in mm:

- app. 86mm x 86mm x 25mm

16.2. Technical data SwitchPilot Servo

Operational modes:

- NMRA/DCC „Accessory Decoder“ compatible. Address range from 1 - 2044
- Märklin® Motorola® compatible, up to turnout number 384. k83 compatible. k84 logic
- Power supply by digital command station or separate DC- or AC-power supply.
- Maximum supply voltage: 18V AC or 24V smooth DC.

Servo outputs:

- 2 Servo outputs for RC-servos (e.g.: Graupner® JR, Futaba® or ESU), adjustable pulse duration between 1.0 msec and 2.0 msec, positive pulse. Adjustable speed and end positions.
- Power supply for the servos with 5V stabilised supply. Maximum current draw of the servo: 250 mA continuous, 500 mA peak (20 seconds)

Dimensions in mm:

- app. 86mm x 86mm x 25mm

16.3. Technical data SwitchPilot Extension

Operating modes:

- Extension module for SwitchPilot, power is supplied by the latter. Relay outputs are controlled by SwitchPilot.

Outputs:

- 4 Relays with two outputs each (2 x changers), switched as one, with screw terminals for potential-free switching or power supply for electro-frogs.
- Maximum load per relay output: 30V AC, 2 A continuous.

Dimensions in mm:

- app. 86mm x 86mm x 25mm

17. List of all supported CVs

CV	Name	Description	Range	Value		
1	Decoder address 1, LSB	Lower 6 bits (bit 0 - 5) of the first decoder address for the outputs 1 to 4. Is used in conjunction with CV 9 in order to store the address.	1 - 63	1		
3	Configuration output 1 (only SwitchPilot!)	Describes the properties of decoder output 1.		0 - 64	8	
		Function	Description			Value
		Variable	k83-compatible: output is active as long as the button at the control panel is pressed.			0
		Pulse mode PECO	pulse mode for PECO-turnout drives. Reduces the sensitivity of the overload protection.			1
		Pulse mode	Duration of „On“-status: multiple of 65 msec.			2 - 31
		Alternating blinker	Out A and Out B are alternately active. Duration of „On“-status: multiple of 130 msec			32 - 63
Bi-stable	k84-compatible: either Out A or Out B is active, variable	64				
4	Configuration output 2 (only SwitchPilot!)	Describes the properties of decoder output 2		0 - 64	8	
		Function	Description			Value
			- as CV 3 -			
5	Configuration output 3 (only SwitchPilot!)	Describes the properties of decoder output 3.		0 - 64	8	
		Function	Description			Value
			- as CV 3 -			
6	Configuration output 4 (only SwitchPilot!)	Describes the properties of decoder output 4.		0 - 64	8	
		Function	Description			Value
			- as CV 3 -			
7	Version number	Internal software version of the decoder	-	-		
8	Manufacturer's ID	Manufacturer's ID by ESU Writing value 8 results in a full factory reset of all CVs.	-	151		
9	Decoder address 1, MSB	higher 3 bits (bit 6 - 8) of the first decoder address for the outputs 1 to 4. used together with CV 1 to store the address.	0- 7	0		

CV	Name	Description	Range	Value	
28	RailCom® configuration	Activation and configuration of RailCom-functions 0 - 3	0		
		Bit Description	Value		
		1 Data transfer on channel 2 No data transfer on channel 2 Data transfer on channel 2 permitted	0 2		
		2 Confirmation of command on channel 1 No confirmation of command on channel 1 Confirmation of command on channel permitted	0 4		
29	Configuration register	DCC-configuration settings for SwitchPilot		128	
		Bit Description	Value		
		3 RailCom® communication RailCom® communication is switched off RailCom® communication is permitted	0 8		
		7 Decoder is DCC Accessory Decoder (read only, cannot be reprogramed)	128		
33	Function output status (only SwitchPilot!)	Current status of function outputs 1 to 4.		0 - 255	-
		The status of the 8 feedback contacts is only valid if they are wired correctly to the turnout feedback contacts. The value of CV 33 can be read and displayed via RailCom®.			
		Bit Description	Value		
		0 Status output 1, input <u>FB A</u>	1		
		1 Status output 1, input <u>FB B</u>	2		
		2 Status output 2, input <u>FB A</u>	4		
		3 Status output 2, input <u>FB B</u>	8		
		4 Status output 3, input <u>FB A</u>	16		
		5 Status output 3, input <u>FB B</u>	32		
6 Status output 4, input <u>FB A</u>	64				
7 Status output 4, input <u>FB B</u>	128				

List of all supported CVs

CV	Name	Description	Range	Value		
34	„Zoom“-configuration	Defining the outputs 1 - 4 that should show the „fade-in, fade-out“ effect when turned on or off. „Zoom“ means slow fade-in or fade-out of the function. This enables you to simulate the prototypical changeover of daylight signals, hence this function only makes sense for daylight signals.	0 - 31	0		
		Bit			Description	Value
		0			„Zoom“ - function active for output 1	1
		1			„Zoom“- function active for output 2	2
2	„Zoom“- function active for output 3	4				
3	„Zoom“- function active for output 4	8				
35	Decoder address 2, LSB (only SwitchPilot!)	Lower 6 bits (bit 0 - 5) of the second decoder address for the outputs 5 and 6. Is used in conjunction with CV 36 in order to store the address.	1 - 63	1		
36	Decoder address 2, MSB (only SwitchPilot!)	Higher 3 bits (bit 6 - 8) of the second decoder address for the outputs 5 and 6. Is used in conjunction with CV 35 in order to store the address. Value 8 in CV36 switches off the second address (factory setting)	- 8	8		
37	Servo 1, rotation speed	Running time (speed) of servo 1 from one end position to the following. The running time is always a multiple of 0.25 seconds: 1 = 0.25s,...,63 = 15.75s	0 - 63	15		
38	Servo 1, Position „A“	Position A of Servo 1. Value indicates the pulse duration transmitted to the servo. Value 0 = 1msec,..., 63 = 2msec.	0 - 63	24		
39	Servo 1, Position „B“	Position B of Servo 1. Value indicates the pulse duration transmitted to the gesendet wird. Wert 0 = 1ms,..., 63 = 2ms.	0 - 63	40		
40	Servo 2, rotation speed	Like CV 37	0 - 63	15		
41	Servo 2, position „A“	Like CV 38	0 - 63	24		
42	Servo 2, position „B“	Like CV 39	0 - 63	40		
43	Servo 3, rotation speed	Like CV 37 (only SwitchPilot Servo!)	0 - 63	15		
44	Servo 3, position „A“	Like CV 38 (only SwitchPilot Servo!)	0 - 63	24		
45	Servo 3, position „B“	Like CV 39 (only SwitchPilot Servo!)	0 - 63	40		
46	Servo 4, rotation speed	Like CV 37 (only SwitchPilot Servo!)	0 - 63	15		
47	Servo 4, position „A“	Like CV 38 (only SwitchPilot Servo!)	0 - 63	24		
48	Servo 4, position „B“	Like CV 39 (only SwitchPilot Servo!)	0 - 63	40		

17. Warranty certificate

CV	Name	Description	Range	Value	
49	Relay control (only SwitchPilot Extension) (Details in chapter 13)	Configuration, which relay is to be switched decelerated. If Bit active, relay switches between „A“ and „B“.		0 - 15	
		Bit	Description		Value
		0	Relay 1 decelerated switch (addit. SwitchPilot: Switches with 2nd addr.)	1	SPS: 15 SP: 0
		1	Relay 2 decelerated switch (addit. SwitchPilot: Switches with 2nd addr.)	2	
		2	Relay 3 decelerated switch (not for SwitchPilot)	4	
3	Relay 4 decelerated switch (not for SwitchPilot)	8			

Dear customer,

Congratulations on purchasing this ESU product. This quality product was manufactured applying the most advanced production methods and processes and was subject to stringent quality checks and tests. Therefore ESU electronic solutions ulm GmbH & Co. KG grants you a warranty for the purchase of ESU products that far exceeds the national warranty as governed by legislation in your country and beyond the warranty from your authorised ESU dealer.

ESU grants an extended manufacturer's warranty of 24 months from date of purchase.

Warranty conditions:

- This warranty is valid for all ESU products that have been purchased from an authorised ESU dealer.
- No claims will be accepted without proof of purchase. The filled in warranty certificate together with the receipt from your ESU dealer serves as proof of purchase. We recommend keeping the warranty certificate together with the receipt.
- In case of a claim please fill in the enclosed fault description as detailed and precise as possible and return it with your faulty product.

Extend of warranty / exclusions:

This warranty covers free of charge repair or replacement of the faulty part, provided the failure is demonstrably due to faulty design, manufacturing, material or transport. Please use the appropriate postage stamps when shipping the decoder to ESU. Any further claims are excluded.

The warranty expires:

1. In case of wear and tear due to normal use.
2. In case of conversions of ESU – products with parts not approved by the manufacturer.
3. In case of modification of parts, particularly missing shrink sleeves, or wires directly extended on the decoder.
4. In case of inappropriate use (different to the intended use as specified by the manufacturer).
5. If the instructions as laid down in the user manual by ESU electronic solutions ulm GmbH & Co. KG were not adhered to.

You may submit your warranty claims either at your dealer or by shipping the product in question with the warranty certificate, the receipt of purchase and the fault description directly to ESU electronic solutions ulm GmbH & Co. KG to:

ESU GmbH & Co. KG
- Warranty department -
Industriestrasse 5
DE-89081 Ulm

Goods return note

1. Customer data

(please write in block letters)

Name:	_____
Street:	_____
Postal code/Town:	_____
Country:	_____
Email:	_____
Phone	_____
Date:	_____
Signature:	_____

2. Type of fault

- | | |
|---|--|
| <input type="checkbox"/> Transistor outputs 1 - 4 | <input type="checkbox"/> Short circuit |
| <input type="checkbox"/> Servo outputs | <input type="checkbox"/> Dead On Arrival, no function right out of the box |
| <input type="checkbox"/> No function anymore | <input type="checkbox"/> Programming on programming track |

3. Description of fault (add extra page if necessary)

4. Receipt of payment

Please return the goods with an invoice or receipt! Otherwise no warranty!

6. Address of your retailer

Retailer's stamp or address

